

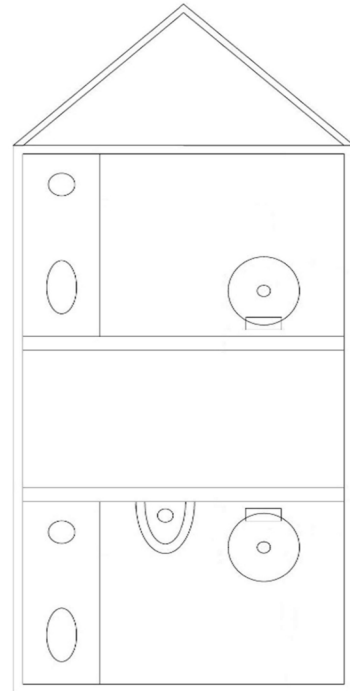
OI-2RT

**Interior Standard Features**

Smooth durable fiberglass interior on composite backer (no wood)  
12 Volt LED lighting - (2) lights per room  
Lockable base cabinets  
Solid surface countertops with molded sinks  
Waste basket cut outs and waste baskets  
Self closing commercial faucets  
Soap dispensers (shipped loose)  
Paper towel dispenser  
Toilet paper holders  
Ultra low water use ceramic bowl pedal flush toilets  
Waterfree urinal (men's restroom only)  
Sanitary Napkin receptacles (women's restrooms only)  
Shatterproof mirrors  
Heavy duty door closers  
1 Piece transit grade flooring on non-absorbent "Ever Floor"  
Climate control sensor inside restroom

**Exterior Standard Features**

Large 32" heavy duty entrance doors  
Occupancy lighting  
1 Piece roof  
Smooth durable fiberglass exterior on composite backer  
Porch lights at all entry doors w/ switch in control room  
Fold down steps with swing-out grab handles  
3" quick connect waste tank access valve  
LED waste tank indicator  
3/8" HDPE waste tanks  
Large access door in rear for 1" wash out plug  
City water connection  
30 amp marine-style power cord  
Roof mounted Air Conditioner w/ heat strip  
Climate control center mounted in control room  
External Spray Port with 30' hose and nozzle  
Insulated walls and ceiling  
Torsion axle  
Alum wheels with E-rated trailer specific tires nitro-filled  
Full license plate frame with light & screws  
Fresh water fill/diverter (either hydrates the unit or fills the fresh tank)  
Courtesy light above Control Room door  
E coated frame  
Powder coated aluminum trim  
7k tongue jack  
Stabilizer jacks on all (4) corners - scissor jacks on the front and swing downs on the rear



Overall Width	<u>98.5"</u>
Overall Width Set-Up	<u>119.5"</u>
Overall Length	<u>206"</u>
Overall Height	<u>131.5"</u>
Box Width	<u>76.5"</u>
Box Length	<u>144"</u>
Interior Height	<u>82.5"</u>
Curb Weight	<u>4020 lbs.</u>
Tongue Weight	<u>580 lbs.</u>
Fresh Tank Capacity	<u>150 gal.</u>
Holding Tank Capacity	<u>390 gal.</u>

*\*All information contained herein including, but not limited to, floorplan offerings, specifications, standards, and options are based on the latest information at the time of publishing. This information is subject to change at any time, without notice or obligation.*