

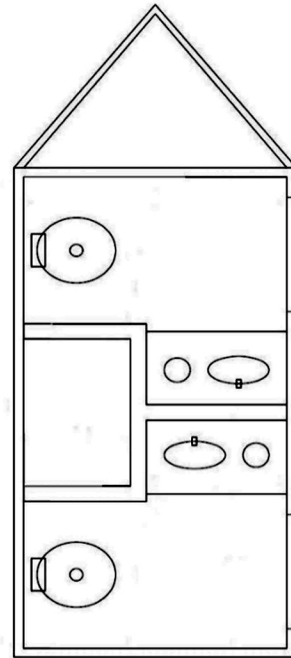
OI-2Mini RT

Interior Standard Features

Smooth durable fiberglass interior on composite backer (no wood)
12 Volt LED lighting
Lockable base cabinets
Solid surface countertops with molded sinks
Waste basket cut outs and waste baskets
Self closing commercial faucets
Soap dispensers
Paper towel dispenser
Toilet paper holders
Ultra low water use ceramic bowl pedal flush toilets
Sanitary Napkin receptacles (women's restrooms only)
Shatterproof mirrors
Heavy duty door closers
1 Piece transit grade flooring on non-absorbent "Ever Floor"
Climate control center mounted in control room
Climate control sensor inside restroom

Exterior Standard Features

28" heavy duty entrance doors
Occupancy lighting
1 Piece roof
Smooth durable fiberglass exterior on composite backer
Porch lights at all entry doors w/ switch in control room
Fold down steps with swing-out grab handles
3" quick connect waste tank access valve
LED waste tank indicator
3/8" **HDPE** waste tanks
Large access door in rear for 1" wash out plug
City water connection
30 amp marine-style power cord
Roof mounted Air Conditioner w/ heat strip
Torsion axle
E-coated steel wheels
E-rated trailer specific tires nitro-filled
Full license plate frame with light & screws
Fresh water fill/diverter (either hydrates the unit or fills the fresh tank)
Courtesy light above Control Room door
E coated frame
7k tongue j
Stabilizer jacks - tongue jack and rear swing downs



| | |
|-----------------------|----------|
| Overall Width | 87" |
| Overall Width Set-Up | 109" |
| Overall Length | 183" |
| Overall Height | 131.5" |
| Box Width | 65" |
| Box Length | 120" |
| Interior Height | 82.5" |
| Curb Weight | 3200 lbs |
| Tongue Weight | 420 lbs |
| Fresh Tank Capacity | 105 gal. |
| Holding Tank Capacity | 260 gal. |

**All information contained herein including, but not limited to, floorplan offerings, specifications, standards, and options are based on the latest information at the time of publishing. This information is subject to change at any time, without notice or obligation.*